

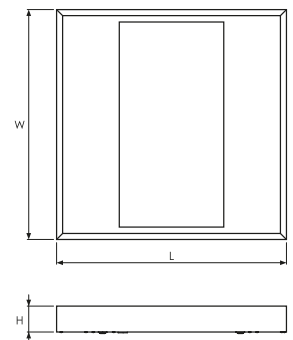


Modern surface mounted luminaire for LED light sources.

TECHNICAL DATA**Mounting:** directly on the ceiling**Body:** powder-painted steel sheet**Colour:** white**Diffuser:** opal plexiglass (PLX)**ELECTRICAL DATA****Power supply efficiency:** >89%**Power:** 220-240V 50/60Hz**Includes light source:** yes**Type of equipment:** STANDARD, DALI, EM 3h**Electrical connection:** max 3x2,5 mm² wire**Light distribution:** rotationally-symmetric**Way of lighting:** direct**OPTICAL DATA****GENERAL DATA****Lifetime (L80B10):** 50 000 h**Operating temperature range:** 0°C ... +35°C**Warranty:** 3 years**Application:** pathways, conference rooms

Code	Replacement of conventional technology [W]	Power LED [W]	Luminaire power [W]	Lumen LED [lm]	Lumen luminaire [lm]	Efficacy [lm/W]	Colour temperature [K]	CRI/Ra
Type of equipment: STANDARD								
300061.00062	3x14W (57W)	22	24	3150	2600	108	3000	≥80
300061.00063	3x14W (57W)	22	24	3150	2600	108	4000	≥80
300061.00064	4x14/18W (76W/96W)	33	37	4500	3700	100	3000	≥80
300061.00065	4x14/18W (76W/96W)	33	37	4500	3700	100	4000	≥80
Type of equipment: DALI								
300061.00071	3x14W (57W)	22	24	3150	2600	108	3000	≥80
300061.00072	3x14W (57W)	22	24	3150	2600	108	4000	≥80
300061.00073	4x14/18W (76W/96W)	33	37	4500	3700	100	3000	≥80
300061.00074	4x14/18W (76W/96W)	33	37	4500	3700	100	4000	≥80
Type of equipment: EM 3h								
300061.00075B	3x14W (57W)	22	29	3150	2600	90	3000	≥80
300061.00076B	3x14W (57W)	22	29	3150	2600	90	4000	≥80
300061.00077B	4x14/18W (76W/96W)	33	39	4500	3700	95	3000	≥80
300061.00078B	4x14/18W (76W/96W)	33	39	4500	3700	95	4000	≥80

Code	Dimensions [mm] L W H	Mounting dimensions [mm] L W	Pallet quantity	Quantity in package	Net weight [kg]
Type of equipment: STANDARD					
300061.00062	626 626 70	375 435	50	1	5.7
300061.00063	626 626 70	375 435	50	1	5.7
300061.00064	626 626 70	375 435	50	1	5.7
300061.00065	626 626 70	375 435	50	1	5.7
Type of equipment: DALI					
300061.00071	626 626 70	375 435	50	1	6.0
300061.00072	626 626 70	375 435	50	1	6.0
300061.00073	626 626 70	375 435	50	1	6.0
300061.00074	626 626 70	375 435	50	1	6.0



Luminous flux tolerance +/- 10%.

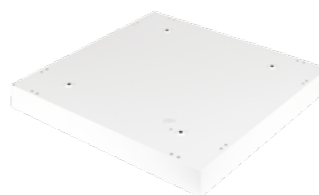
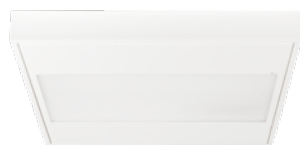
Power tolerance +/- 5%.

Lighting beam, light intensity distribution and light efficiency were examined in accordance with the EN ISO 17025:2005 norm for EN13032 norm series and the LM-79 norm.

Up-to-date product info available on our website www.lugbox24.com

Code	Dimensions [mm] L W H	Mounting dimensions [mm] L W	Pallet quantity	Quantity in package	Net weight [kg]
Type of equipment: EM 3h					
300061.00075B	626 626 70	375 435	50	1	6.7
300061.00076B	626 626 70	375 435	50	1	6.7
300061.00077B	626 626 70	375 435	50	1	6.7
300061.00078B	626 626 70	375 435	50	1	6.7

OTHER PICTURES



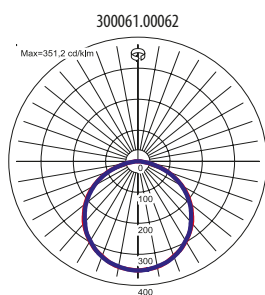
ACCESSORIES



150180.00700

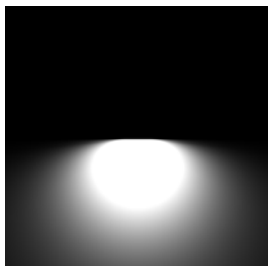
Disassembly suction cup

LIGHT BEAM CURVES



WAY OF LIGHTING

300061.00062



Luminous flux tolerance +/- 10%.
Power tolerance +/- 5%.

Lighting beam, light intensity distribution and light efficiency were examined in accordance with the EN ISO 17025:2005 norm for EN13032 norm series and the LM-79 norm.
Up-to-date product info available on our website www.lugbox24.com